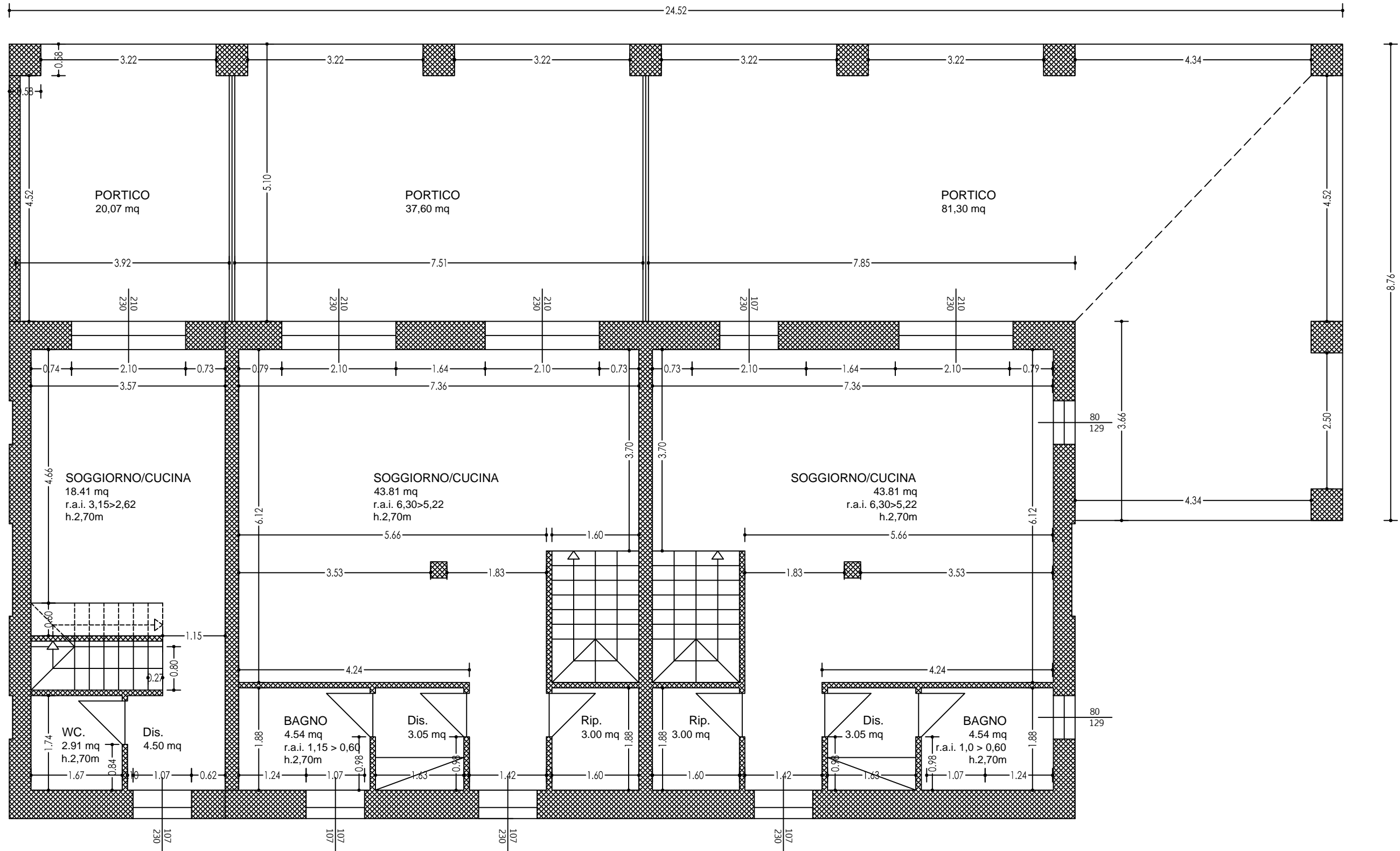


UNITA' 3

UNITA' 2

UNITA' 1



PIANTA PIANO TERRA

UNITA' 1: SU: 50,12 mq | SA: 24,07 mq

UNITA' 2: SU: 106,86 mq | SA: 41,60 mq

UNITA' 3: SU: 106,86 mq | SA: 41,60 mq